

# **Power Supply Procurement Plan**

**SALE FOR RESALE  
[2025]**

**ILOCOS SUR ELECTRIC COOPERATIVE, INC.**

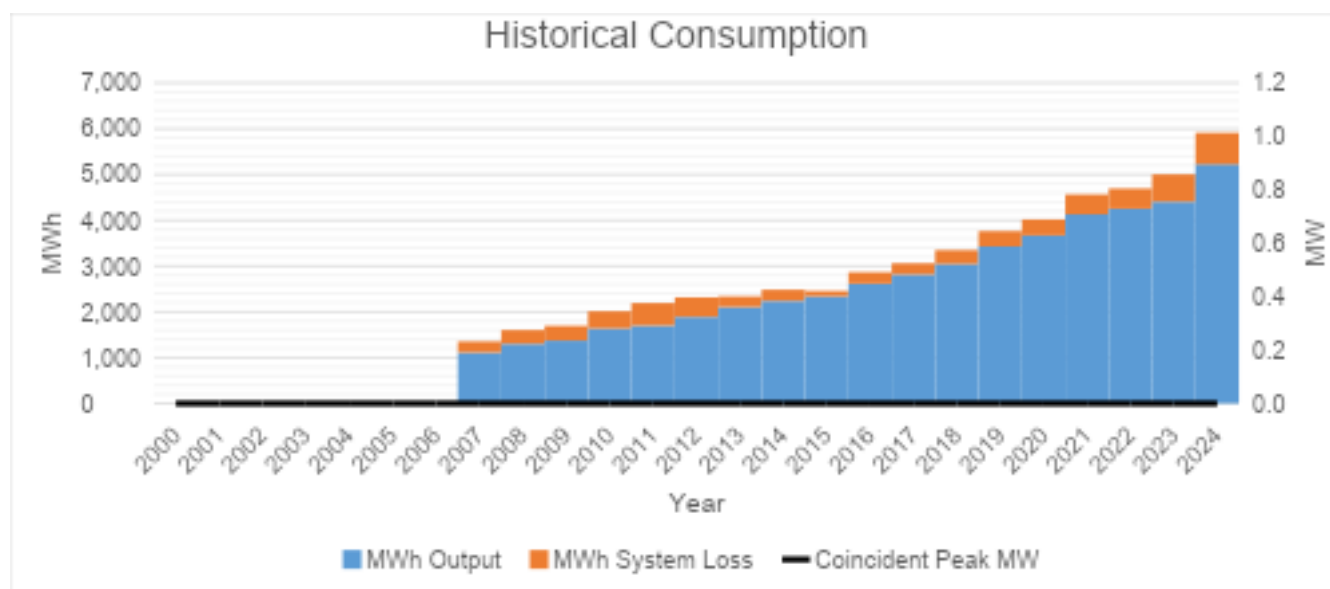
## Historical Consumption Data

	Coinciden t Peak MW	MWh Offtak e	WESM	MWh Input	MWh Output	MWh Syste m Loss	Load Factor	Discrepanc y	Transm' n Loss	Syste m Loss
2007	0.00	1,354	0	1,354	1,113	241		0.00%	0.00%	17.81%
2008	0.00	1,603	0	1,603	1,303	300		0.00%	0.00%	18.72%
2009	0.00	1,695	0	1,695	1,374	321		0.00%	0.00%	18.96%
2010	0.00	2,014	0	2,014	1,638	376		0.00%	0.00%	18.67%
2011	0.00	2,193	0	2,193	1,701	492		0.00%	0.00%	22.42%
2012	0.00	2,317	0	2,317	1,892	426		0.00%	0.00%	18.37%
2013	0.00	2,337	0	2,337	2,106	231		0.00%	0.00%	9.90%
2014	0.00	2,484	0	2,484	2,241	243		0.00%	0.00%	9.79%
2015	0.00	2,457	0	2,457	2,339	118		0.00%	0.00%	4.79%
2016	0.00	2,866	0	2,866	2,617	249		0.00%	0.00%	8.70%
2017	0.00	3,061	0	3,061	2,818	243		0.00%	0.00%	7.93%
2018	0.00	3,349	0	3,349	3,046	303		0.00%	0.00%	9.04%
2019	0.00	3,764	0	3,764	3,429	335		0.00%	0.00%	8.90%
2020	0.00	4,019	0	4,019	3,671	348		0.00%	0.00%	8.65%
2021	0.00	4,564	0	4,564	4,129	435		0.00%	0.00%	9.53%
2022	0.00	4,694	0	4,694	4,254	440		0.00%	0.00%	9.38%
2023	0.00	5,003	0	5,003	4,409	594		0.00%	0.00%	11.88%
2024	0.00	5,912	0	5,912	5,224	688		0.00%	0.00%	11.64%

For Sale for Resale as Buyer (S4R as Buyer), ISECO sources power from nearby cooperatives. The municipalities of Cervantes and Quirino are supplied by Benguet Electric Cooperative (BENECO) and Mountain Province Electric Cooperative, Inc. (MOPRECO), while the municipality of Sugpon is supplied by La Union Electric Cooperative (LUELCO).

For Sale for Resale as Seller (S4R as Seller), ISECO supplies power to two barangays in Tubo, Abra, Dilong and Tubtua which are adjacent to the municipality of Quirino, Ilocos Sur. The MWh Offtake from BENECO, LUELCO, and MOPRECO increased from 5,003 MWh in 2023 to 5,912 MWh in 2024, reflecting an 18.17% growth due to rising electricity demand.

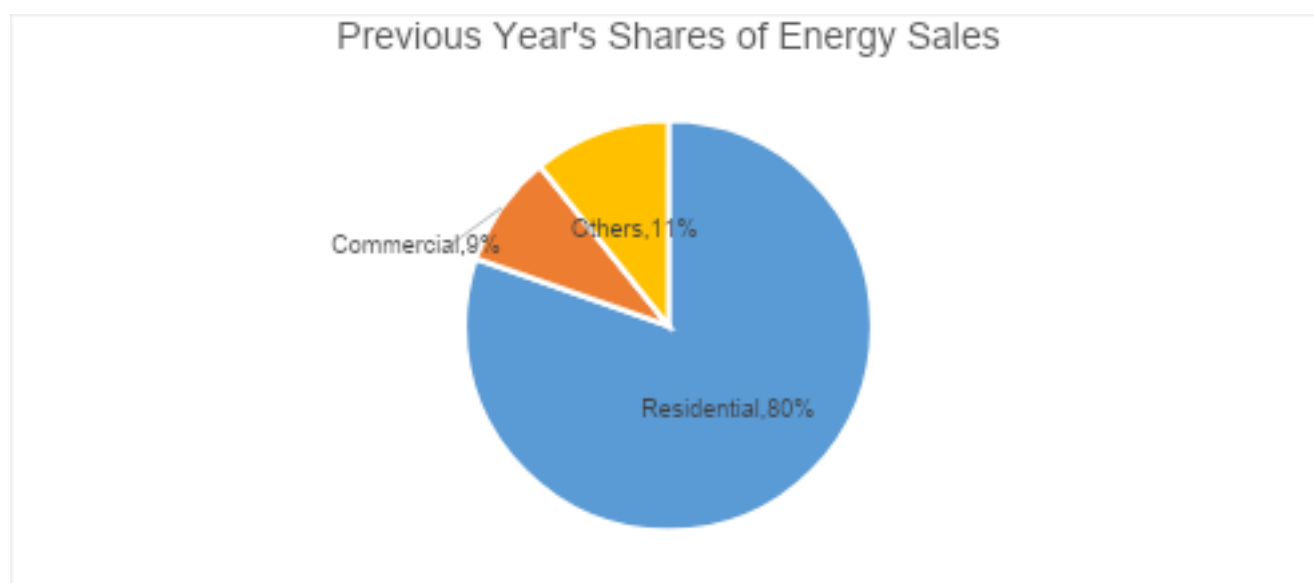
A negative value for Feeder Technical Loss was recorded in December 2022 due to an error caused by the reversion of BAPA to individual metering.



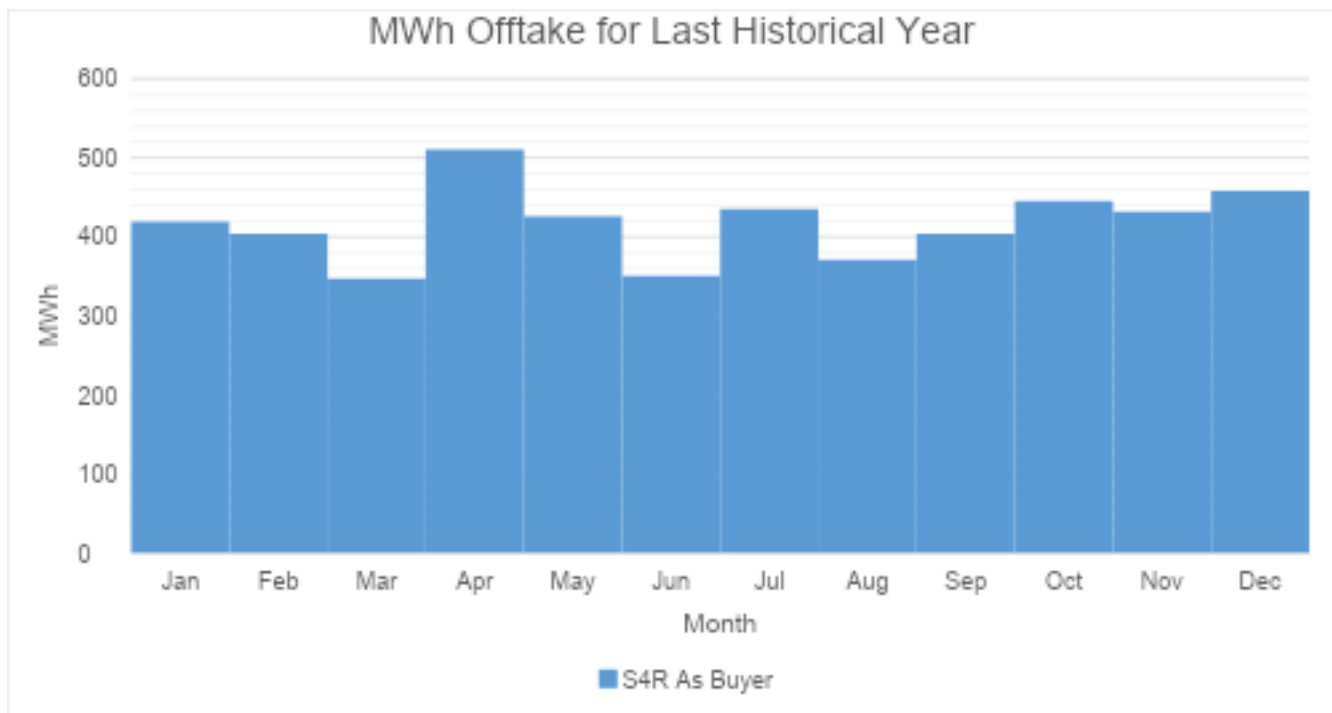
MWh Output increased from year 2023 to year 2024 at a rate of 18.48%, while MWh System Loss increased at a rate of 15.81% within the same period.



Historically, System Loss ranged from 4.79% to 22.42%. System Loss peaked at 22.42% on year 2011.



Residential customers account for the bulk of energy sales at 80.31% due to the high number of connections. In contrast, Industrial customers accounted for only 0.00% of energy sales to the low number of connections.



## Previous Year's Load Profile

There is no previous year's load profile (Instantaneous MW) because ISECO did not extract the load profile data from the meter.

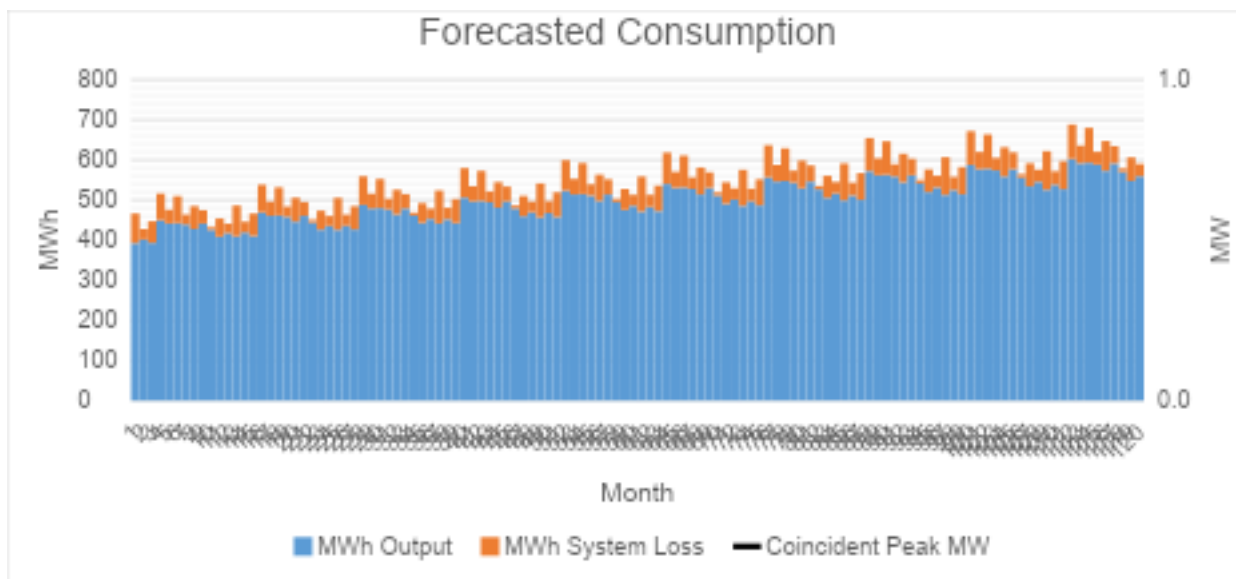
## Forecasted Consumption Data

		MWh Offtake	MWh Output	MWh System Loss	Transm'n Loss	System Loss
2025	Jan	466	392	74	0.00%	15.86%
	Feb	428	402	26	0.00%	5.99%
	Mar	447	393	54	0.00%	12.02%
	Apr	516	450	66	0.00%	12.82%
	May	475	442	34	0.00%	7.12%
	Jun	510	443	67	0.00%	13.19%
	Jul	464	439	24	0.00%	5.28%
	Aug	485	428	57	0.00%	11.80%
	Sep	474	441	33	0.00%	6.96%
	Oct	432	426	7	0.00%	1.54%
	Nov	454	409	45	0.00%	9.99%
	Dec	441	417	24	0.00%	5.35%
2026	Jan	486	409	77	0.00%	15.81%
	Feb	446	419	27	0.00%	5.97%
	Mar	466	410	56	0.00%	11.98%
	Apr	538	469	69	0.00%	12.78%
	May	496	461	35	0.00%	7.10%
	Jun	532	462	70	0.00%	13.15%
	Jul	484	458	25	0.00%	5.26%
	Aug	506	446	59	0.00%	11.77%
	Sep	495	461	34	0.00%	6.93%
	Oct	451	444	7	0.00%	1.53%
	Nov	473	426	47	0.00%	9.96%
	Dec	460	436	25	0.00%	5.34%
2027	Jan	505	426	80	0.00%	15.77%
	Feb	464	436	28	0.00%	5.95%
	Mar	485	427	58	0.00%	11.94%
	Apr	559	488	71	0.00%	12.74%
	May	516	479	36	0.00%	7.07%
	Jun	552	480	72	0.00%	13.11%
	Jul	503	477	26	0.00%	5.24%
	Aug	526	464	62	0.00%	11.73%
	Sep	515	479	36	0.00%	6.91%
	Oct	469	462	7	0.00%	1.52%
	Nov	492	443	49	0.00%	9.93%
	Dec	478	453	25	0.00%	5.32%
2028	Jan	524	441	82	0.00%	15.72%
	Feb	481	452	29	0.00%	5.93%
	Mar	502	442	60	0.00%	11.91%
	Apr	580	506	74	0.00%	12.70%
	May	534	497	38	0.00%	7.05%
	Jun	573	498	75	0.00%	13.07%
	Jul	521	494	27	0.00%	5.23%
	Aug	545	481	64	0.00%	11.69%
	Sep	533	497	37	0.00%	6.89%
	Oct	486	479	7	0.00%	1.52%

	Nov	510	460	50	0.00%	9.90%
	Dec	496	470	26	0.00%	5.30%
2029	Jan	542	457	85	0.00%	15.67%
	Feb	497	468	29	0.00%	5.91%
	Mar	519	458	62	0.00%	11.87%
	Apr	599	523	76	0.00%	12.66%
	May	553	514	39	0.00%	7.03%
	Jun	592	515	77	0.00%	13.03%
	Jul	539	511	28	0.00%	5.21%
	Aug	563	498	66	0.00%	11.66%
	Sep	552	514	38	0.00%	6.87%
	Oct	503	495	8	0.00%	1.51%
	Nov	527	475	52	0.00%	9.86%
	Dec	513	486	27	0.00%	5.28%
2030	Jan	559	471	87	0.00%	15.63%
	Feb	513	483	30	0.00%	5.89%
	Mar	536	472	63	0.00%	11.83%
	Apr	618	540	78	0.00%	12.63%
	May	570	530	40	0.00%	7.00%
	Jun	611	531	79	0.00%	12.98%
	Jul	556	528	29	0.00%	5.19%
	Aug	581	514	68	0.00%	11.62%
	Sep	569	530	39	0.00%	6.84%
	Oct	519	511	8	0.00%	1.51%
	Nov	544	491	54	0.00%	9.83%
	Dec	529	501	28	0.00%	5.26%
2031	Jan	575	486	90	0.00%	15.58%
	Feb	528	497	31	0.00%	5.87%
	Mar	552	487	65	0.00%	11.79%
	Apr	637	557	80	0.00%	12.59%
	May	587	546	41	0.00%	6.98%
	Jun	629	548	81	0.00%	12.94%
	Jul	573	543	30	0.00%	5.17%
	Aug	598	529	69	0.00%	11.58%
	Sep	586	546	40	0.00%	6.82%
	Oct	535	527	8	0.00%	1.50%
	Nov	560	506	55	0.00%	9.80%
	Dec	545	517	29	0.00%	5.25%
2032	Jan	591	499	92	0.00%	15.53%
	Feb	543	511	32	0.00%	5.85%
	Mar	567	500	67	0.00%	11.76%
	Apr	654	572	82	0.00%	12.55%
	May	604	562	42	0.00%	6.96%
	Jun	646	563	83	0.00%	12.90%
	Jul	589	559	30	0.00%	5.15%
	Aug	615	544	71	0.00%	11.54%
	Sep	603	562	41	0.00%	6.80%
	Oct	550	542	8	0.00%	1.50%
	Nov	576	520	56	0.00%	9.77%
	Dec	560	531	29	0.00%	5.23%
2033	Jan	607	513	94	0.00%	15.48%

	Feb	558	525	33	0.00%	5.83%
	Mar	582	514	68	0.00%	11.72%
	Apr	672	588	84	0.00%	12.51%
	May	620	577	43	0.00%	6.93%
	Jun	664	578	85	0.00%	12.86%
	Jul	605	574	31	0.00%	5.14%
	Aug	631	559	73	0.00%	11.51%
	Sep	619	577	42	0.00%	6.77%
	Oct	564	556	8	0.00%	1.49%
	Nov	591	534	58	0.00%	9.74%
	Dec	575	545	30	0.00%	5.21%
2034	Jan	622	526	96	0.00%	15.44%
	Feb	572	538	33	0.00%	5.81%
	Mar	597	527	70	0.00%	11.68%
	Apr	688	603	86	0.00%	12.47%
	May	636	592	44	0.00%	6.91%
	Jun	680	593	87	0.00%	12.82%
	Jul	620	588	32	0.00%	5.12%
	Aug	647	573	74	0.00%	11.47%
	Sep	634	592	43	0.00%	6.75%
	Oct	579	570	9	0.00%	1.49%
	Nov	606	547	59	0.00%	9.70%
	Dec	590	559	31	0.00%	5.19%

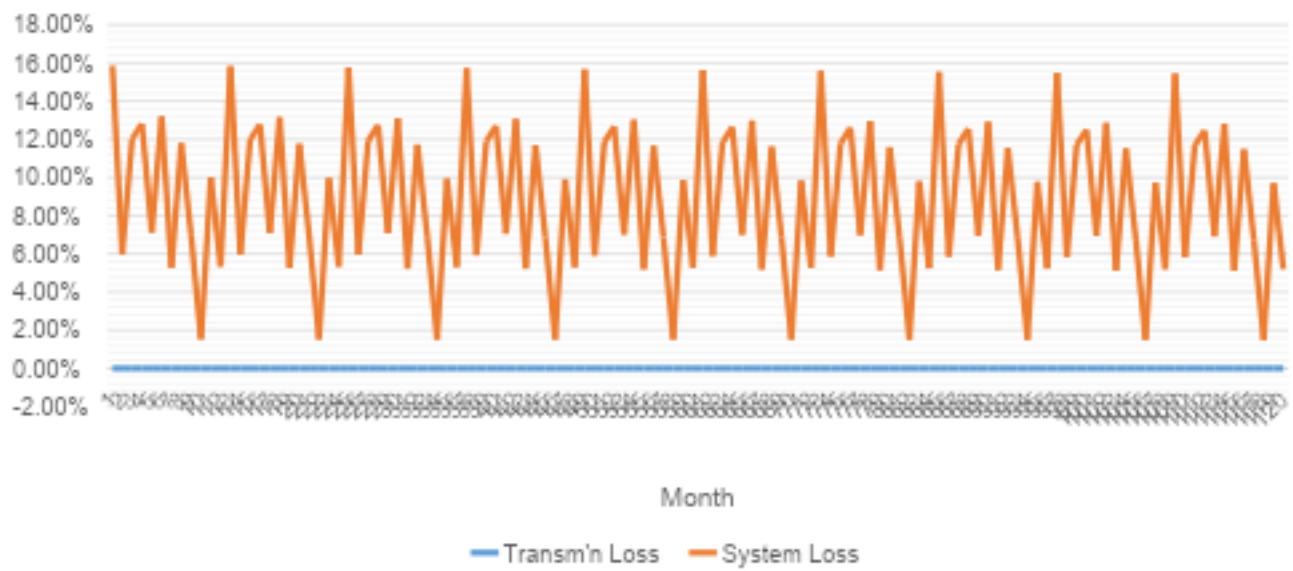
MWh Offtake was forecasted using cubic trend ( $Y = a + bt^3$ ).



MWh Output was expected to grow at an average rate of 3.31% annually.

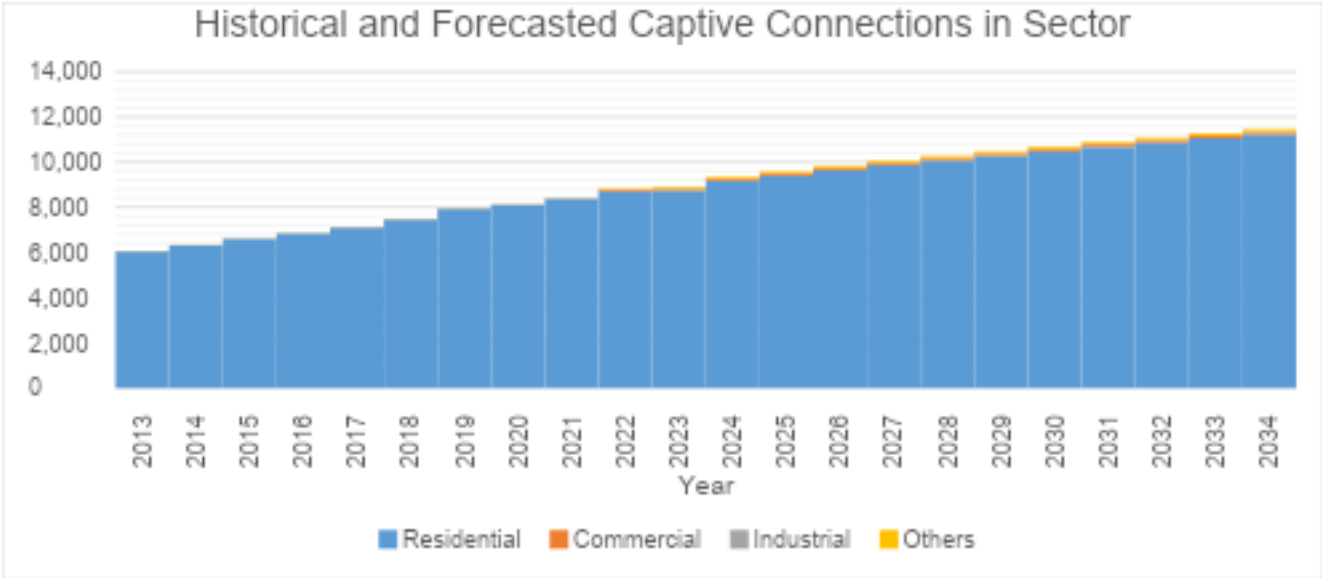
System loss is expected to range from 15.86% to 1.49%. To reduce this loss, there is a planned to construct the 3-phase line from San Emilio to Quirino, which will supply the load for the municipality of Quirino. This municipality will be transferred from Sale for Resale to the Main Grid.

Forecasted Losses





# Captive Customer Connections



The number of Residential connections is expected to grow at an average rate of 2.06% annually. Said customer class is expected to account for 78.30% of the total consumption.